



## Anzac Park Public School P&C Meeting

### 14 August 2018, at 7pm

### Meeting Minutes

- Meeting opened:** Joanna Zanello opened the APPS Parents and Citizens (P&C) meeting at 1904pm on Tuesday 14 August 2018 in the Staff Room.
- In attendance:** Joanna Zanello, Briony Geekie, Elissa (Lee) Auzins, Kathryn Allen, Amy Sackville, Brooke Fuerbach, Irina Schuchman, Kate Kingsford Smith, Albaraa Mojada, Trent Faehndrich, Grant Kepler, Brendan Meyer, Xanthe Heubel, Mayela Garcia, Marcela Gonzalez, Kim Hugginson, Kim Dennis, Alison Taylor, Carmen Tate, Virginia Ranchagoda, Indika DeSilva, Paula Saunders, Katie Stewart, Alan Hinton, Briony Geekie
- Apologies:** Unity Taylor Hill, Belinda Daley
- Minutes from:** Briony Geekie accepted the minutes from 12 June 2018
- Correspondence In/Out:** Gladys Berejiklian MP – generic communication (Western Harbour Tunnel and Northern Beaches Link Update)
- President's Report:** (Joanna Zanello) Deferred update to September meeting however advised the P&C are already working on Summer Mountain Top
- Principal's Report:** (Mrs Amy Sackville)
1. Reminders
    - Wednesday 15 August - Musica Viva Incursion Stage 2 & 3
    - Tuesday 21 August - Big Book Week Picnic
    - Wednesday 22 August - Great Book Swap
    - Thursday 30 August - K-2 Athletics Carnival
    - Thursday 6 September - Year 2 BYOD Parent Info Night
    - Thursday 13 September - Spring Soiree Performing Arts Concert
  2. Staffing Update – 2019 anticipated staffing will soon be advised, expected increase in Learning & Support and ESL and dialect – ex sup across school
  3. There are a few staff taking leave during Term 3 Mr Kordwell, Ms Kelly, Miss Georgiadis, Mrs Bright
  4. Deputy Principal's current focusses are –
    - Wellbeing & looking at whole school approaches. This is data driven and evidence base to ensure proactive rather than reactive, including positive mind and body learning.
    - Anti-Bullying – forming a community drafting a plan to represent parents, teachers and students
    - Learning and support – supporting students' needs and tracking monitor and supporting teachers as well as overseeing Caribbean.
    - Continuing leaning Learning 4 Life vision - recently held a parent forum. Ensuring both students & parents are aware of what is happening
    - Community Gardening – recent grant received to set up at the school as well as donations from Bunnings. Environmental leaders from years 5 & 6 will form a community gardening club. Currently considering a weekend or day to start this. Nathan will support to maintain this
    - Visiting Mildura – developing city/country partnerships and learning from another school and reviewing what APPS is doing. Gather and organise info to inform our school vision and 3 year plan
    - Mentoring and Coaching – Investing in teachers, working alongside them in the classroom and identifying areas of focus and working with them (release from class) to reflect and facilitate what we value and know what works.
  5. Before and after school care
    - APPS currently have the second largest OOSH service on Lower North Shore with 198 places on site. Surface lease for this service takes over proportion of space for

alternative activities which limits space for other options to be offered

- Teachers currently support 18 extracurricular programs in their own time. Teachers coordinate & plan the programs which are not based around child care but fostering skills & gifts and also representing the school, IE: dance, lego league, senior choir
- There are 6 alternative programs currently offered on site. These programs are selected via community consultation and open to be reviewed at the end of each year, last survey was in term 2. They are required to enter into community user agreement which take on average 1 month to complete. APPS have to keep and maintain band and string (extracurricular). Currently availability of space for Thursday and Friday mornings. Resilience in Schools will be on site at APPS from Term 4
- 5 company's also currently run programs with transport to or from school, including golf, tennis, resilience, soccer
- Classrooms are not available for external after school activities to run due to the confidentiality aspect and technology plus need for teachers to access for meetings and planning.

6. Thank you to P&C for shade sail – flood of kids are enjoying it. Games terrace will get a smaller shade arch prior to summer. Big thanks from the school and the P&C to Flynn McDermott who arranged for the grant to support this happening.

**Treasurers Report:**  
(Kathryn Allen)

There is currently approximately \$60000 in bank – with an expected \$107000 to be received from the school from Voluntary Contributions.

Recent Income

\$6000 deposited from various P&C events in 2018

\$39000 shade reimbursement

\$689 – second hand uniform sale

Expenses

\$369 - donation to Marys House from movie night proceeds

Also paid insurance and a number of subscriptions

The P&C have approved \$80,000 worth of new assets for the school so far this year.

1. A STEAM iPad bank and additional resources including robotics, laptops and Maker equipment
2. Additional non-fiction books for the library
3. Play resources for the playground including a range of non-fixed equipment
4. PSSA Uniforms and House Banners
5. Student Shark Tank - supporting student led initiatives
6. Alternative play space - providing an alternative quiet play space in the COLA outside STEAM

## General Matters:

### a. Active Transport (Grant Kepler)

- Please refer to addendum 1 for full presentation
- After 2 years in the making on 31 August the Active transport program MAKE YOUR MOVE will be launched. A Collaboration between APPS and North Sydney Council and Neutral Bay Public School
- FAQ
  - But I have to drive because? - The program is not mandatory
  - How long does it run for? The program is ongoing and will run its course for remainder of year and be reviewed in T1 next year
  - What about other routes? Residential population falls into 4 main pockets – if more is identified it can be created in the future
  - What can I do to help? Email [anzacparkpandc@gmail.com](mailto:anzacparkpandc@gmail.com) or [grant.kepler@bigpond.com](mailto:grant.kepler@bigpond.com)

### b. Envirobank & Recycling (Briony Geekie)

- All families received the orange bag last week. The P&C are fundraising with Envirobank using APPS as a pick up point. Plastic and aluminum single serve containers only. Communication about what can go in and how and when drop off happens is continuing but important to note only drop off on allocated days, the first being Friday 7th September– then families will receive a new bag and continue monthly.
- In school recycling options – school about to roll out composting. Next step planning is recycling
- Require volunteers on 7<sup>th</sup> -

### c. Before and After School options (Kim Dennis)

- Recently ran an open survey with 154 responses, of which 119 had a requirement for Before and after school care options, highest need was Wednesday and Thursday PM. Activities that were noted as of interest were: art & craft, martial art, coding, dance, drama, lego robotics, resilience & yoga/mindfulness, and touch typing for the Stage 2/3 groups
- Met with Unity and informed what was and was not possible on site at APPS due to OOSH space requirements.
- Advised NS Dem has got a weekly newsletter and charge for advertising and 4 activities offered daily –Unity advised council support DEM with space. Unity was open to considering a spot on the new website for the P&C to provide links to activities. Kim suggested maybe sending notices to parents (free or advertising fee which creates competition)
- Identified encouragement of more before and after school activities offsite was needed which could be achieved by speaking to other schools and supplies of such and NS Council and possibility working with jigsaw on potential incursions

### d. Smokestacks/Tunnel (Alison Taylor)

- Please refer to addendum 2 for full presentation

### e. Trivia Night (Russell Rigby)

Not present to provide update

### f. Jigsaw Update (Irina Schuchman)

- Incursions – GrowFit is currently available on a Tuesday afternoon (additional cost is \$11 per session or \$16.50 per session with equipment to keep)
- Changed rollcall processes working better. Kindergarten completed in Grandstand, Years 1-6 are separated in wither the hall or library
- Gates locked till 7.30am in the morning

### g. Uniform Committee (Kim Hugginson)

Deferred

### h. Uniform Suggestion (Jenny Phillipson)

Deferred

Contact to the P&C at [anzacparkpandc@gmail.com](mailto:anzacparkpandc@gmail.com) or via the Konnective App

Meeting Closed at 2105

# ANZAC PARK PUBLIC SCHOOL

ACTIVE TRAVEL INITIATIVE – “MAKE YOUR MOVE”



# MAKE YOUR MOVE – WHAT IS IT?

- A collaboration between the APPS and North Sydney Council
- Raising awareness of and promoting active travel of students, parents and carers
- Active Travel
  - Walk
  - Ride
  - Scoot
  - Skate
  - “Drive and stride”
- Part of the efforts in relation to road safety within the precinct



# MAKE YOUR MOVE – WHAT IS IT?

- Active travel routes





# MAKE YOUR MOVE – WHAT IS IT?



# MAKE YOUR MOVE – WHAT IS IT?

- Passport

**MAKE YOUR MOVE**  
WALK. RIDE. SCOOT. SKATE.  
**PASSPORT**

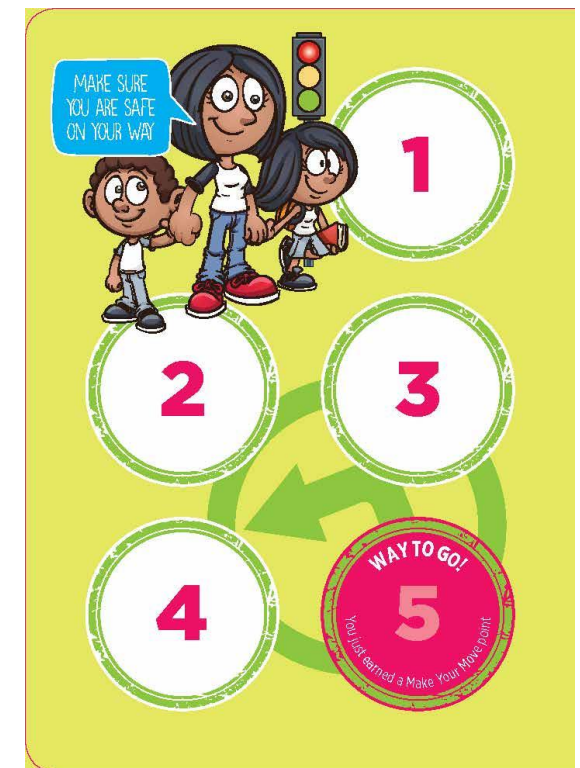


Name:

Class:

School:

MAKE YOUR MOVE  
PASSPORT  
ACTIVE SCHOOL TRAVEL





# MAKE YOUR MOVE – WHAT IS IT?

- School-wide goal
  - One lap of Hwy 1 in a term.



# MAKE YOUR MOVE – WHAT IS IT?



Active Travel Champions!

(Example only)

Hi, I'm [Maria]! (not her real name)

You would think that being a busy person looking after seven kids would mean I never leave the house without taking the car.

But no, notwithstanding my high flying corporate job staring into overbearing client demands, I ride with the kids to school and then to work each day.

My kids are healthier and happier, I'm healthier and happier, and the money I save allows me to fund my ongoing caffeine dependency.



# MAKE YOUR MOVE - WHY?

- It's good for the kids
- Physical health
  - walking and riding gives children opportunities for daily physical activity and the chance to learn about their neighbourhood
  - We know that a much higher proportion of children are now driven to school than in the past. As a result, children are now less active than before
- Mental strength
  - children who get physical activity in the morning arrive at school more alert and ready to learn
- Environmental wellbeing and awareness







# MAKE YOUR MOVE - WHY?

- It helps reduce local area congestion





- It might just be good for the parents!



MAKE YOUR MOVE - WHY?

\* Actual results may vary.

# MAKE YOUR MOVE – FAQs

- “But I have to drive because [..]”
- But what about parking?
- How long does it run for?
- What about other routes?
- What can I do to help?



- APPS P&C contact details:
  - [info@appspandc.org.au](mailto:info@appspandc.org.au)
  - [grant.kepler@bigpond.com](mailto:grant.kepler@bigpond.com)



**WANT TO KNOW MORE? CAN YOU HELP?**

The APPS community is always on the lookout for parents and carers who are able to assist in our programs. For more information on current developments or to see what you can do to help, contact the APPS P&C.

## Impacts on Anzac Park Public School from the Northern Beaches and Western Harbour tunnel projects

*During 24x7 construction (from 2020)*

- Truck movements in surrounding streets to remove tunnel spoil
- Construction dust
- Noise
- Anzac Park drainage project, Ernest St Bridge construction

*Ongoing (from 2026)*

- There will be **2 x UNFILTERED** stacks located 300m from Anzac Park Public School pumping out exhaust from vehicles along the length of the southbound Northern Beaches tunnel and the northbound Western Harbour tunnel.
- These tunnels are 6.5km and 7.2km in length, by 3 lanes wide. So, equivalent of over 41 km of polluting road being pumped out of the stacks opposite Anzac Park Public School
- Exits for both tunnels will be on the Warringah Freeway 300m from the school

### Action Plan – Please action

The Anzac Park Public School P&C ask the school community to request filtration for the future health of our children. At the very least, we would ask that you request filtration to be considered in the design of the stacks, per the recommendation in the 2006 Joint Parliamentary Inquiry.

1. Put your pin/s on the RMS Plan. Add multiple pins for each impact you object to.

Start with “I object...”

Western Harbour Tunnel

<http://www.rms.nsw.gov.au/projects/sydney-north/western-harbour-tunnel-beaches-link/consultation-map.html>

Northern Beaches Tunnel

<http://www.rms.nsw.gov.au/projects/sydney-north/western-harbour-tunnel-beaches-link/consultation-map-bl.html>

2. Call or email the RMS with your feedback. Please ask for filtration of the stacks and for filtration to be considered in the design and the EIS.

Phone: 1800 931 189

Email: [whtbl@rms.gov.au](mailto:whtbl@rms.gov.au)

3. Please also call or email Gladys’ office with your feedback. Please ask for filtration of the stacks and for filtration to be considered in the design and the EIS.

Phone: 9439 4199

Email: [Willoughby@parliament.nsw.gov.au](mailto:Willoughby@parliament.nsw.gov.au)

*Gladys was provided with numbers from the RMS briefing (by the RMS?) and told North Sydney councilors, at a meeting with them on Friday, that an attendance of 35 parents was not very many. Despite the fact that this was a meeting at 7pm on a school night, the turnout was large in comparison with regular P&C meetings. Perhaps parents were expecting other local consultation from the RMS? Either way, if you are concerned about this project, please let Gladys know.*

---

*The following 3 pages contain a summary of the information gleaned from the RMS Briefing to APPS Parents and Community. There are also links to further information.*

### **The RMS Briefing to Anzac Park Public School, 7<sup>th</sup> August 2018**

The RMS released the reference design for the Western Harbour and Northern Beaches tunnels a couple of weeks ago.

They came to the school on Tuesday 7 August to discuss the design and answer questions. The following were in attendance:

- 35 Parents and community members
- Andrew Mattes – RMS Air Quality Scientist
- Doug Parris – RMS WHTBL (Western Harbour Tunnel Beaches Link) Project Director
- Chris Armstrong – Acting NSW Chief Scientist and Engineer
- Steve Brien – RMS Communications Specialist

### **What we were told/ Information from the session**

Doug Paris (RMS Project Director) advised that:

- The main construction site will be located in Cammeray Golf Course next to Warringah Freeway
- The amount of dust will attempt to be minimised as the tunnelling entry will be housed in a warehouse.
- The RMS will try to minimise truck movements by enabling access directly onto the freeway from the Cammeray Golf Course construction site.
- Warringah Freeway on and off ramps will be removed from the Ernest St bridge. This is in order to return Ernest St back into to a residential street.

Andrew Mattes (RMS) advised that:

- The RMS will not perform air quality monitoring until 1 year before opening
- There will be further degradation on air quality as a result of the stacks, but the pumping into the atmosphere would ensure that on most days, it would not be significant.
- The pollution from the ventilation stacks will be diluted 200 to 1000 times.
- Air pollution concentration from surface traffic will be worse than that pumped out by the ventilation stacks.
- There is no safe level of exposure to pollution and Government should work to drive down this pollution
- When Temperature inversion occurs during Winter, this would trap the pollution and force it downwards. Dispersion would not be ideal.



Summary of other information from the RMS (answers to questions etc):

- The M5 East filtration trial was a trial to filter the tunnel air, not filter the air in the ventilation stacks. The RMS have not had experience in filtration of ventilation stacks.
- The RMS advised that based on the M5 East filtration trial, it would cost between \$50 - \$80M for each outlet to filter 600 – 1200 cubic metres of air. [The M5 East filtration trial, a retrofit, is nothing like that being requested by communities for filtration of these ventilation stacks and the costs would be expected to be far less than this.]
- The RMS policy is to 'not filter'.
- The RMS will not consider filtration in its design of the ventilation stacks
- The Middle Harbour crossing is very deep and there will be a steep tunnel gradient up to the exits, increasing the amount of pollutants as vehicles accelerate to get up the hill.
- The Environmental Impact Statement (EIS) is being developed and will be released at the end of the year
- The EPA and the newly appointed NSW Chief Scientist will review the EIS
- The RMS advised that the tunnel is 'like the E4 Stockholm tunnel', with longitudinal ventilation and no filtration. [The E4 Stockholm tunnel of 18km has 10 air exchange stacks plus one emergency smoke release valve. The specification for the E4 Stockholm tunnel prescribed that there would be no section of 5km or longer between ventilation stacks as they are aware that 4.5km to 5km tunnel lengths are where emission levels within road tunnels climb significantly.] The RMS advised that if the Northern Beaches and Western Harbour tunnels were to have equivalent ventilation, then more people would have stacks built next to them.
- The RMS were unable to provide details of any other modern long road tunnel that uses longitudinal ventilation with only end stack ventilation that allows trucks and buses to use it and is still unfiltered.

#### **What we still don't know**

- What is the volume of particulates that will be pumped out of the stack? This should be in the EIS.
- What is the volume of trucks that will travel on Ernest St during construction (note that construction is 24x7)? This will be in the EIS.
- What is the impact on air pollution from increased surface traffic on Warringah freeway? This will be in the EIS.
- What is the impact of air pollution from pumping 42km of polluting road from the ventilation stacks? This will be in the EIS.
- What will be the height of the stacks? The RMS talked about 20-40m, but advised that the EIS would state the actual height.
- What would be the cost of filtration of the ventilation stacks on these tunnels? Filtration is currently not being considered, despite the 2006 Joint Parliamentary Inquiry that recommended all future road tunnels have a filtered design option prepared.

Feedback from parents was overwhelmingly that we want filtration. A comment was made that there are no benefits to us, but as key stakeholders, we are not being listened to. The RMS advised of the above action plan.

**More information**

There are other concerns and impacts as a result of this project (eg. Heritage, Aboriginal Heritage, Environmental, Business Case etc).

The APPS P&C have chosen to only focus on the construction and ongoing air quality impacts.

Note that the school itself cannot oppose any part of this project, as it is a Government school. Unity and the teachers must remain impartial and so the concerns can only be voiced by the P&C and parents. More information can be found in the following locations:

The Western Harbour and Northern Beaches tunnel reference design documents

<http://www.rms.nsw.gov.au/documents/projects/sydney-north/western-harbour-tunnel-beaches-link/western-harbour-tunnel-project-update.pdf>

<http://www.rms.nsw.gov.au/documents/projects/sydney-north/western-harbour-tunnel-beaches-link/beaches-link-project-update.pdf>

Schools against Stacks

This FB page is Sydney-wide impacts on schools from Westconnex, Northconnex, F6, Western Harbour tunnel, Northern Beaches tunnel ventilation stacks.

<https://www.facebook.com/pg/SAS-Schools-Against-Stacks-740525653005157/posts/>

Stopthetunnel.org

<https://www.stopthetunnel.org/>

This website was developed to publish local (Camberay, Naremburn, Crows Nest) impacts from the Northern Beaches and Western Harbour tunnels. It contains detailed information from experts on the Health, Environmental, Heritage & Conservation impacts.

You can also find and request to follow them on their FB page

<https://www.facebook.com/stoptunnels/>

Information about air pollution

<https://vimeo.com/278243564>

Information about tunnel ventilation options

<https://vimeo.com/280038554>

NORTAG (Northern Residents Tunnels Action Group)

This is a local residents action group. It contains information about local impacts and North Sydney council meetings where the tunnel impacts and/ or air quality is being discussed. In addition, the page often reposts pages of impacts from other parts of the Westconnex network or news articles relating the project.

You can find and follow them on their FB page

<https://www.facebook.com/NBeachesHarbourTunnels/> or webpage [nortag2017.wixsite.com/nortag](http://nortag2017.wixsite.com/nortag)